



Trident[™] Specimen Radiography System

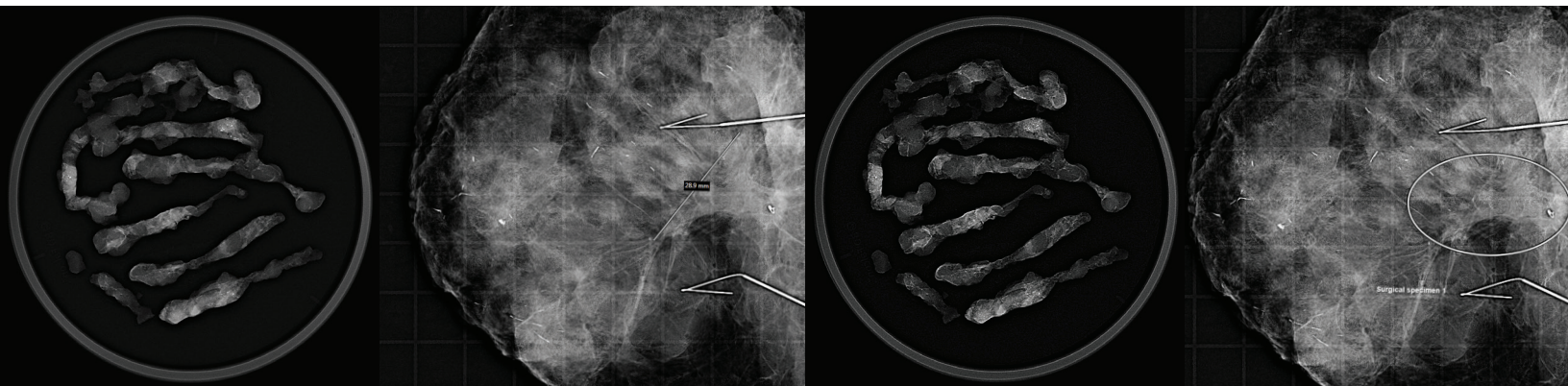
Superb Image Quality for Streamlined Workflow

The Trident system's sharp, high quality images allow for instant verification of samples right in the procedure or operating room, resulting in reduced procedure time and improved workflow.¹ The exclusive enhanced visualization tool provides five user-selectable levels of image sharpening for optimal detail.

Verification Confidence

The Trident specimen radiography system is another example of Hologic's long-standing tradition of providing innovative products, offering a cost-effective workflow solution for clinicians performing breast biopsies. Its micro-focused X-ray tube, specimen image processing algorithms and selenium-based detector technology provide the excellent image quality that you've come to expect from Hologic.

Trident[™]
Specimen Radiography System



Enhancement Level: 1

Enhancement Level: 3

Enhancement Level: 5

Enhancement Level: 5



Clarity. Insight. Confidence.

The Trident™ specimen radiography system leverages Hologic's amorphous selenium direct conversion detector technology, which eliminates the need to convert X-rays to light. The result is exceptionally sharp digital images. Its high image quality, combined with easy-to-use software, offers reduced procedure steps and improved workflow. With a large, 12 x 14 cm active imaging area, the Trident specimen radiography system can accommodate a wide range of biopsy sizes, from cores to large specimens. The Trident system is ideal for radiologists, breast surgeons and pathologists, and easily integrates into your facility.

The Trident system images can be sent to the PACS or the SecurView® DX diagnostic workstation with the touch of a button, allowing for quick communication and decision-making.

“ The Trident system provides exceptionally high image quality, allows rapid verification of tissue samples and is extremely easy to use. Trident will be a valuable tool in helping improve the delivery of breast care for women. ”

Gary M. Levine M.D.

Director of Breast Imaging

Hoag Breast Care, Newport Beach, CA.



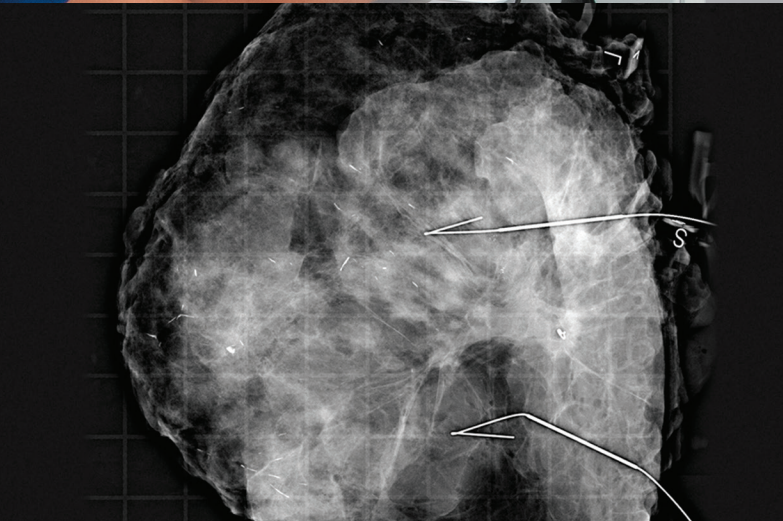
Ergonomic Design

- Self-contained, fully integrated system
- Mobile cart for easy transport between rooms
- Tilting LCD display for optimal viewing
- Easy to open, safety-interlocked chamber door
- Auto-sensing magnification reduces procedure steps
- Convenient specimen stage storage compartment
- Convenient pull-out shelf for expanded work surface



Operator Productivity

- User-friendly control panel and software interface; requires no specialized X-ray knowledge
- Superb image quality in minimal steps at the point of care reduces patient procedure time¹
- Lighted specimen chamber facilitates workflow by assisting with accurate specimen positioning
- Robust toolset includes annotate, measure, magnification, zoom, invert, win/level enhancements, custom user presets and more
- Convenient, once-a-month calibration, which can be auto-configured to run at power down.



Exceptional Image Quality

- Proprietary selenium direct conversion detector technology to quickly obtain sharp, high resolution images
- Large 12 x 14 cm imaging area offers versatility to image core biopsies and surgically excised samples
- Unique algorithms optimized for breast specimen radiography processing
- Innovative enhanced visualization tool offers five image optimization levels for improved lesion conspicuity 1.5 X and 2.0 X geometric magnification with auto-level detection
- Automatic Exposure Control (AEC) optimized for breast excisions and core biopsies



Robust Connectivity

- Easy integration into your facility; one button sends images to the SecurView DX diagnostic workstation or PACS
- Capture annotations, measurements and enhancements in a new DICOM file
- Flexible image output to printer for hardcopy reproduction or to removable media devices
- Efficient access to Modality Worklist

A comprehensive family of solutions

The Trident™ specimen radiography system complements Hologic's full range of imaging, diagnostic and interventional solutions to meet your needs today and in the future. Hologic's interventional products are designed to work together as a complete set of breast biopsy solutions to help you improve efficiency, optimize the patient experience, and deliver the best outcomes possible. From image guidance systems and breast biopsy devices, to specimen imaging, site markers and accelerated treatment options, Hologic provides the most comprehensive solutions to treat your patients. Be sure to talk with your Hologic representative about which breast biopsy solutions are right for you and your patients.



References

1. Intraoperative digital specimen mammography: prompt image review speeds surgery. *The American Journal of Surgery*. Volume 192, Issue 4, October 2006, pages 513-515 papers from The American Society of Breast Surgeons.

www.hologic.com | info@hologic.com | +1.800.442.9892

Hologic Headquarters
United States / Latin America
250 Campus Drive
Marlborough, MA 01752
USA Tel: +1.508.263.2900
Sales: +1.781.999.7453
Fax: +1.781.280.0668
Email: info@hologic.com

Hologic Europe
Everest (Cross Point)
Leuvensesteenweg
250A 1800
Vilvoorde, Belgium
Tel: +32.2.711.4680
Fax: +32.2.725.2087

Hologic Asia Pacific Limited
Hologic Asia Pacific Limited
Unit 01-03A, 13/F, 909 Cheung
Sha Wan,
No 909 Cheung Sha Wan Road,
Cheung Sha Wan, Kowloon,
Hong Kong
Tel: +852 3748 7700
Fax: +852 3526 0723

Hologic Australia
Suite 402, Level 4
2 Lyon Park Road
Macquarie Park NSW 2113
Australia
Tel: +61.2.9888.8000
Fax: +61.2.9870.7555

PB-00130 Rev.002 (1/18) ©2018 Hologic Inc. All rights reserved. Hologic, Trident, Affirm, ATEC, Brevera, Celero, Eviva, SecurView, Sertera, The of Sure, and associated logos are trademarks and/or registered trademarks of Hologic, Inc., and/or its subsidiaries in the United States and/or other countries. This information is intended for medical professionals in the U.S. and other markets and is not intended as a product solicitation or promotion where such activities are prohibited. Because Hologic materials are distributed through websites, eBroadcasts and tradeshows, it is not always possible to control where such materials appear. For specific information on what products are available for sale in a particular country, please contact your local Hologic representative.