

# Canon



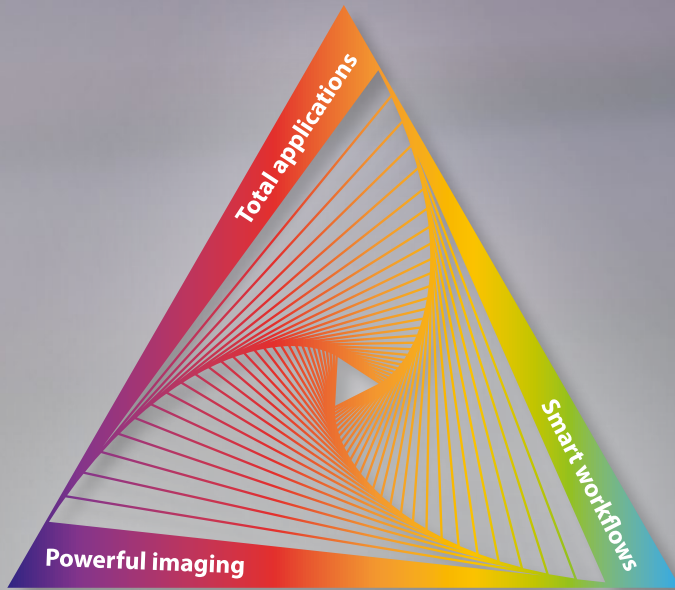
***Aplio i-series***

**Prism Edition**

Light your day.  
Color your world.

powered by **AI**

# See ultrasound imaging in a new light



powered by **AI**



## Open up to a new level of diagnostic precision

---

Connect with Aplio's new iBeam+ technology for a whole new level of diagnostic precision and imaging capability with Aplio i-series / Prism Edition.

Create optimal diagnostic pathways with the abundance of advanced diagnostic and interventional tools provided on Aplio i-series / Prism Edition.

Collaborate with other modalities, peers and experts to enhance your productivity and clinical capability.

***iBeam+***

**A complete, customizable solution for every clinical need**

# A whole new experience

With new insights come new opportunities. Aplio i-series is a trusted premium ultrasound platform with powerful imaging, quantification and advanced analysis capabilities for a wide range of clinical specialties. Its particular strength is the consistent, robust performance and efficiency across a comprehensive range of clinical applications.

**Aplio allows me  
to take clinical  
confidence to a  
whole new level**

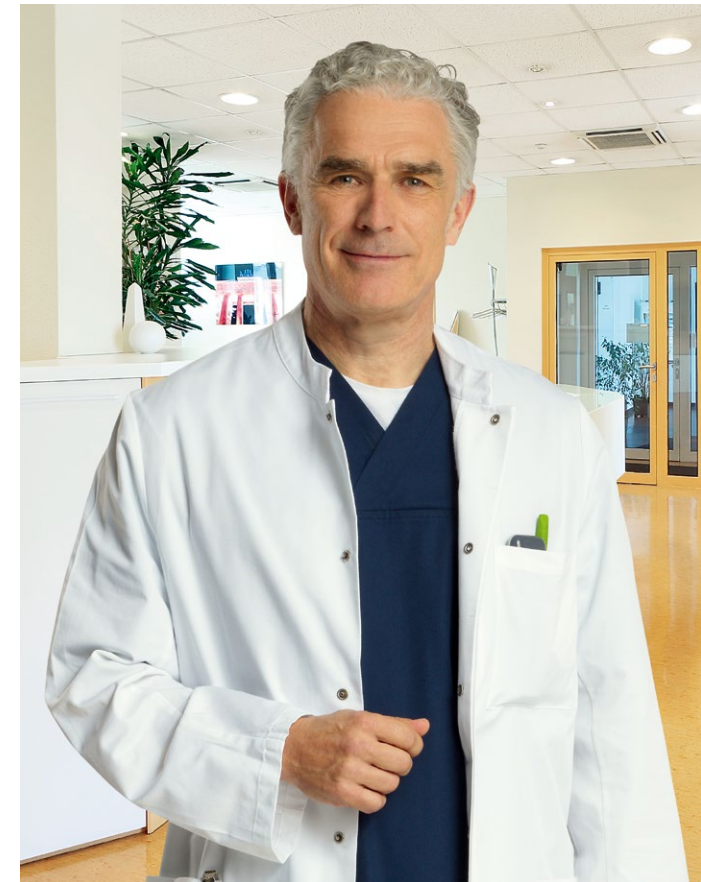


Aplio provides signature imaging quality and robustness for a wide range of clinical applications.

Smart imaging technology further enhances clarity, depth and detail.

Next-generation SMI depicts fine flow with strongly reduced clutter with free breathing.

Ultra Wide View offers an extended field of view without sacrificing image quality or frame rate.



## Aplio let's me tread new diagnostic pathways with unmatched efficiency



With a wide range of clinically proven imaging and quantification tools, Aplio puts you at the forefront of diagnostic imaging and research.

Aplio provides you with a comprehensive suite of advanced tools to plan, guide and follow up of image-guided interventions.

As a high-performance, multipurpose system, Aplio enables multidisciplinary patient assessment from a single source.



## Aplio's flexibility allows me to create an efficient and comfortable workplace



The carefully redesigned user interface enables a short learning curve for enhanced confidence and productivity.

Improved automation and standardization make your exams faster and more efficient. Even complex tasks are straightforward and easy to complete.

With the flexible console you can create an ergonomic workplace to always work in the magic triangle.\*

## Make it yours

Aplio is a complete multipurpose solution that allows you to customize features and functions to exactly meet your needs. With Canon's FlexStyle technology you can configure the user interface to how you want to work.



Scan more comfortably and more efficiently

# Upgrade your workplace



For more information on setting up an ergonomic workplace go to [healthysonographer.com/](http://healthysonographer.com/)

Aplio's design can help you scan more comfortably and boost your productivity in daily routine as well as more complex cases. Aplio's system console is fully adjustable for seated or standing use and easily accommodates a variety of users. The rotating user interface allows alignment of elbow, wrist & trackball in an ergonomically sound and patient-engaging position.



## Create your ideal workplace

Aplio i-series can be easily and quickly adapted to enable a comfortable, patient-oriented scanning position at all times.

Large monitor with fully articulating arm and handgrip

Floating panel and large touch screen for optimal positioning and operability

Motorized panel height adjustment with 36 cm range

Backlit transducer connectors and convenient footrest



## Enjoy optimal mobility

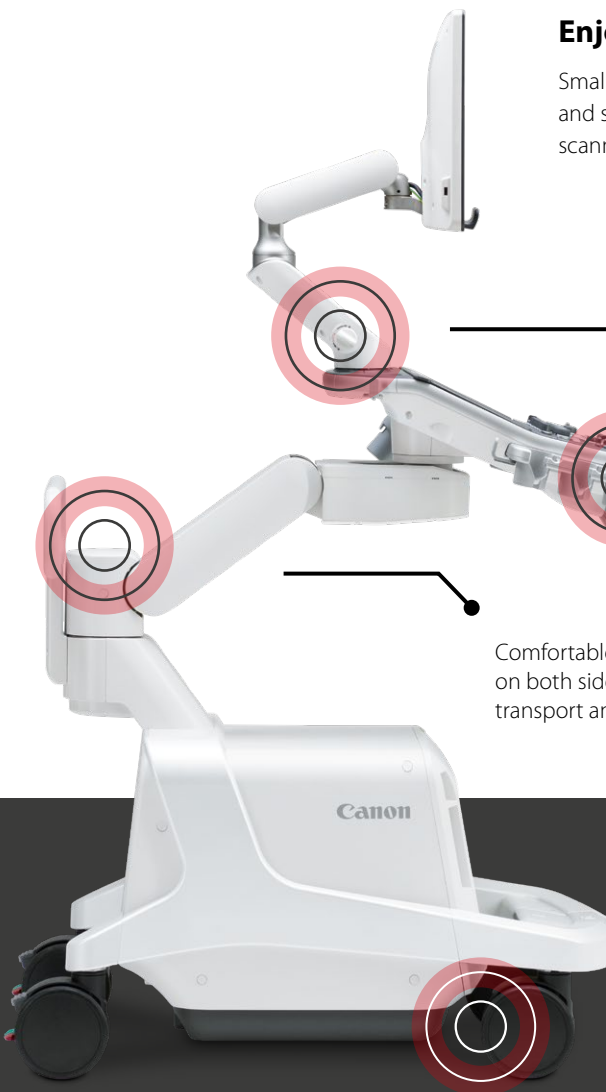
Small and light, Aplio i-series is easy to maneuver and simple to set up ergonomically sound for any scanning situation.

Fully collapsible screen and main panel for easier transport

Up to 30 minutes autonomous scanning with optional battery

Comfortable handles on both sides for easy transport and positioning

Easy-roll casters with central lock and brake mechanism

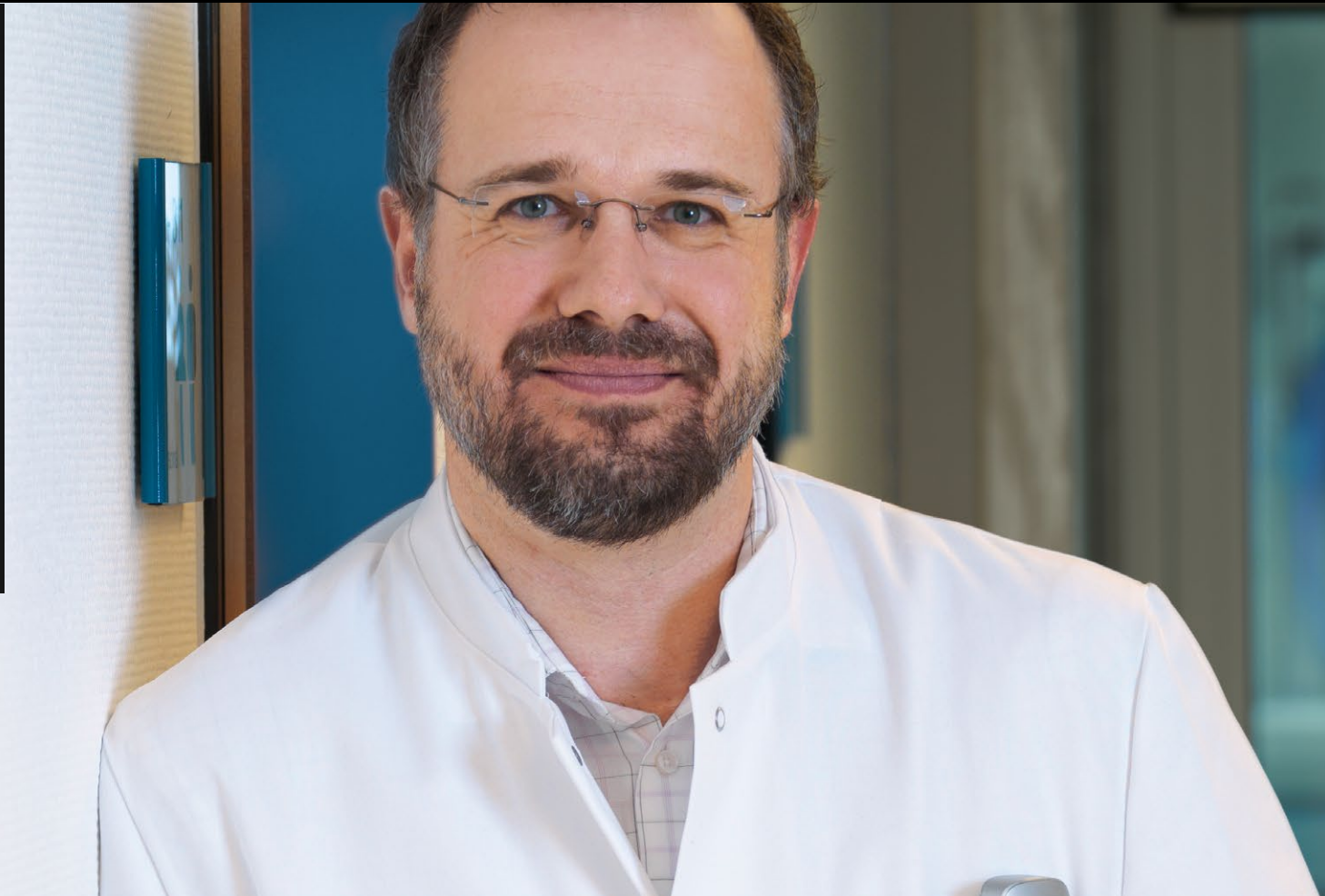


# Welcome to the age of AI\*-assisted imaging

With Canon's suite of intelligent, forward-thinking technologies it's now easier than ever to deliver safe, precise diagnosis and treatment to every patient. While Aplio's smart, Artificial Intelligence (AI)-driven algorithms allow you to create simple and streamlined workflows, they can also help to deliver fast and accurate results for a more personalized treatment of your patients.

**Machine Learning applied  
to expert knowledge  
helps me improve clinical  
outcomes and workflow  
efficiency in no time.**

*powered by AI*







## Intelligent healthcare made easy

Aplio i-series / Prism Edition provides a whole spectrum of flexible, AI-assisted productivity functions enabling you to optimize system operation to match your specific requirements with a programmable, context-sensitive user interface, AI-driven zero-click smart functions and adjustable workflow protocols.

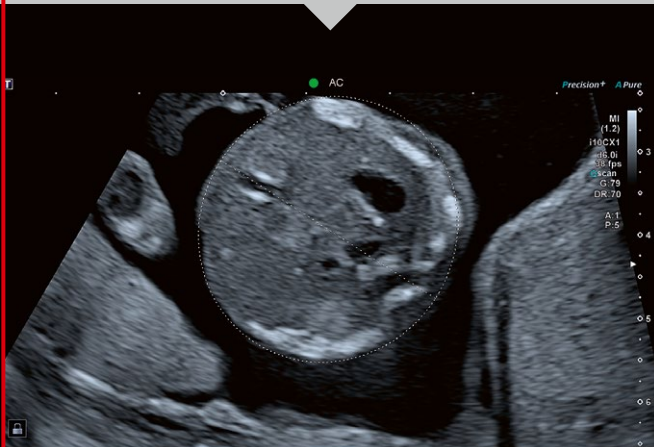
### Standard plane detection

Deep Learning-empowered Smart Area Indication applications for OB help you identify standard anatomical views for faster workflow and enhanced uniformity exam results.



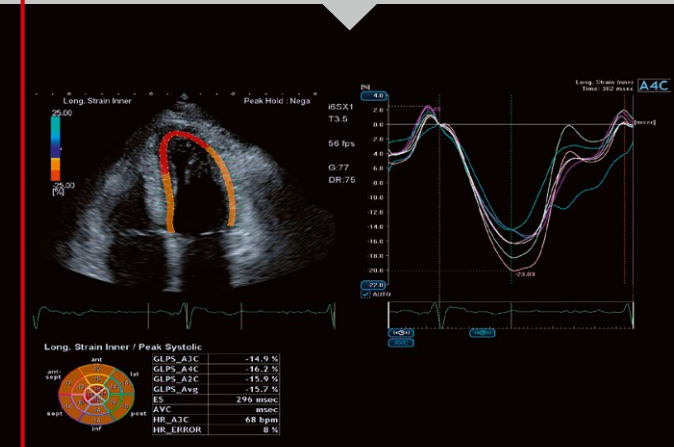
### Zero-click measurements

Fully automated detection and measurement powered by AI helps you improve your workflow consistency and efficiency simply at the touch of a button.



### Automatic identification

Smart algorithms can automatically identify anatomical structure and thus help you to speed up tedious measurements or automated registration of modalities in complex fusion applications.



# Take a holistic view of your patients

Aplio provides clinically validated, non-invasive tools to assess and quantify the entire spectrum of disease stages and to provide easy-to-interpret clinical reporting and guidance for a wide range of clinical targets.

## Early detection

The superior quality of imaging and contrast resolution that Aplio can offer is a fundamental requirement for the early detection of pathologies.

## Advanced visualization

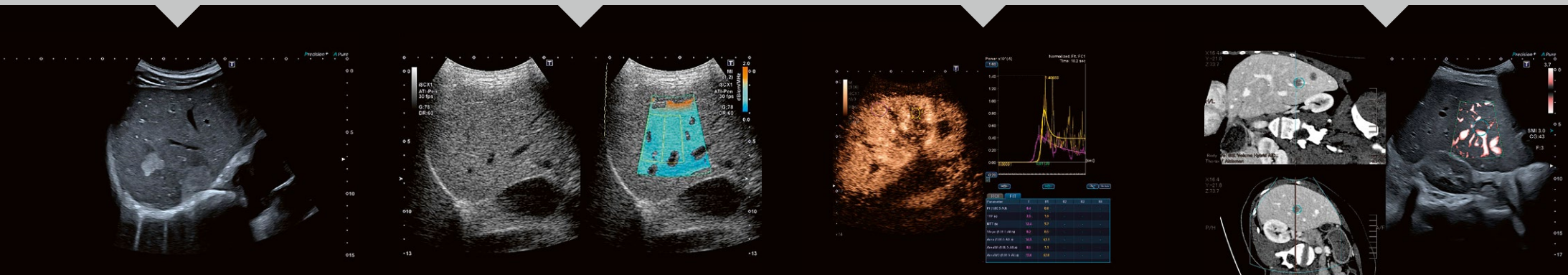
Aplio's clinically proven screening and analysis tools are designed for ultrasound-based imaging and quantitative assessment in the daily routine.

## Clinically proven quantification

Verified by clinical studies, Aplio's wide range of quantification tools are safe and efficient instruments for staging of disease and follow-up of treatment.

## Sophisticated intervention

Aplio's dedicated transducers, imaging and navigation tools help you enhance confidence and accuracy during interventional procedures and in their follow-up.





### Precise follow-up

In combination with the system's onboard reporting, Aplio offers a wide range of quantification tools and the ability to directly compare with previous tests for reliable follow-up.

### Multi Parametric Reporting

Aplio can combine the results of ultrasound and external exams into a single report for a more complete understanding of the disease status.



## Free-breathing ultra-low flow imaging

# Seeing the unseen – next generation

### Ultra-low flow imaging

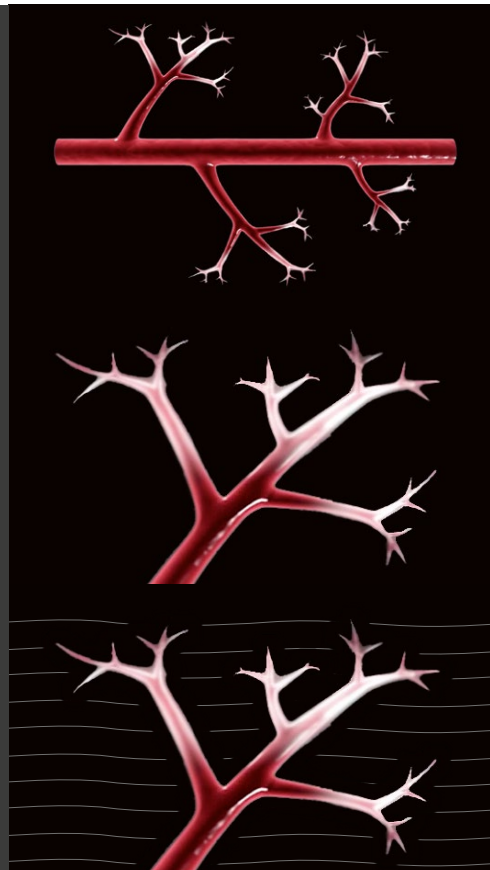
Say hello to a new generation of Superb Micro-vascular Imaging (SMI) that significantly expands the range of visible blood flow from extremely low to high flow with low noise and good sensitivity.

### Ultra-high resolution

Aplio's new iBeam+ architecture enables advanced B-mode image quality with higher frame rate for better visualization of the underlying anatomy.

### Free breathing capability

With next generation SMI, users can experience fine flow even in difficult situations with less clutter and fewer motion artifacts.





SMI's level of vascular visualization, combined with high frame rates, advances diagnostic confidence when evaluating the micro-vasculature of organs and lesions.

The system's quad mode capability depicts up to four different modes including SMI or CEUS simultaneously in real-time for enhanced diagnostic insight.

Smart Sensor 3D allows you to acquire accurate 3D volumes in SMI mode with a standard linear or convex transducer.

# Collaborate and communicate

Whether you work at a large university or local hospital, a private practice or in an imaging center – Aplio i-series / Prism Edition offers a variety of ways to connect to your network, to collaborate with experts, and to communicate directly with colleagues or Canon specialists.



Aplio connects seamlessly into hospital networks providing a full-spectrum solution that helps you manage patients and exams more efficiently while embracing standardized data formats.



For smaller hospitals or practices without an extensive hospital network, Aplio also offers the option of connecting to a local NAS in order to store all data securely.



With the embedded raw data functionality you can optimize, review, analyze and report your clinical data either on the device or on an optionally available workstation without losing functionality.



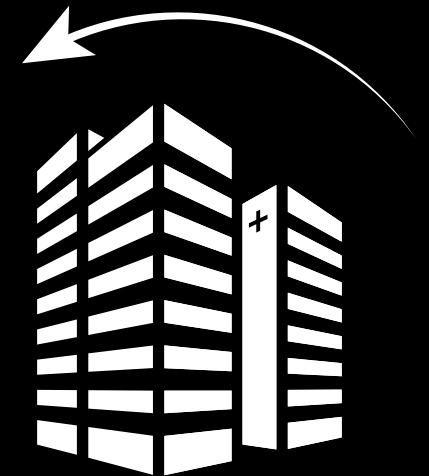
## Advanced visualization

The Vitrea™ Advanced Visualization workstation gives you full access to your clinical data and diagnostic toolbox to manage routine and advanced clinical studies more efficiently.



## Integrating modalities

On Aplio, merging modalities such as CT, MR or PET for synchronized display is a simple, automated process that allows you to easily identify and compare lesions and to safely navigate complex anatomy.



## Interdisciplinary intervention

With dedicated imaging and navigation tools, Aplio can also be integrated with interventional solutions such as the Alphenix 4D CT to further improve confidence and accuracy in interventional procedures and their follow-up.



### Wireless console

The optional wireless tablet allows you to remotely operate the system when it is difficult to scan a patient and reach the panel at the same time, without losing sight of the monitor.



### Remote connect

Need expert advice? Or want to share some findings with peers? With Canon's optional ApliGate solution you can interact securely – right from your workplace.



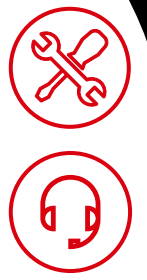
### Cloud services

The system's integrated Tricefy\* option gives you direct access to cloud-based communication, image management and documentation for immediate sharing, access and mobility of medical images and reports.



### Remote support

Connecting Aplio with Canon's InnerVision remote support is simple, safe and provides you with a wealth of benefits that you'll be able to enjoy directly at your system.

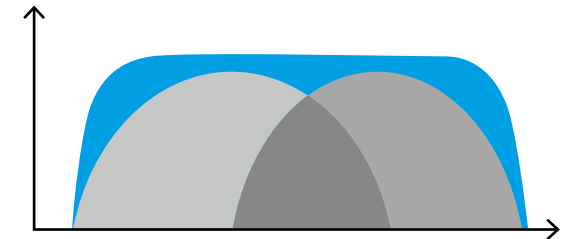
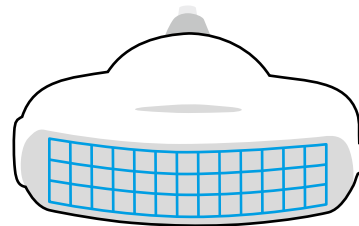
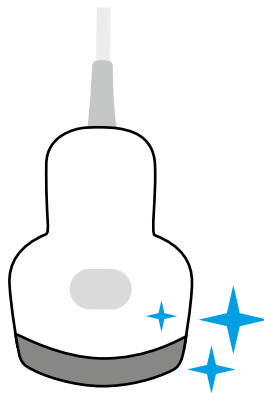


\*Tricefy requires an additional third-party subscription and may not be available in all regions.

**A perfect match from front to end**

# Meticulous design – all out of one hand

At Canon we develop, design and manufacture the core imaging components of our industry-leading ultrasound equipment in-house to ensure that soft- and hardware work perfectly in sync to provide superior clinical and economic value to our customers and their patients.



## Single crystal

Aplio connects to a range of transducers that use single crystal technology to provide better visualization and improved penetration of up to 50 cm, so you can better manage your hard-to-image patients.

## iDMS matrix technology

Aplio's intelligent Dynamic Micro-Slice (iDMS) matrix technology sharpens ultrasonic beams in the elevation direction to create a thin slice beam with continuous focus from the near to the far field.

## Ultra-wideband transducers

Aplio's ultra-wideband, multi-frequency transducers provide superior sensitivity and resolution for both near and far field. The ability to use one transducer across a wider range of patient types can potentially reduce cost, while providing enhanced imaging.



## A higher definition of imaging

iBeam+ is the next level of ultra-fast and precise beam shaping, enhancing image depth and detail with clear, sharp, and distinct images.



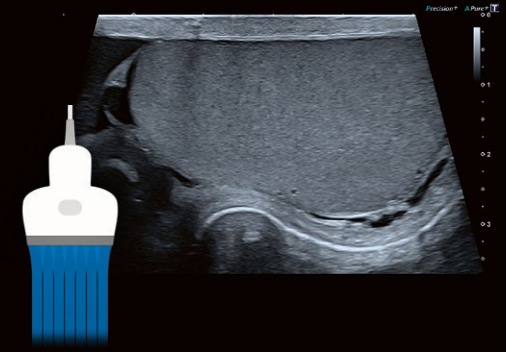
Aplio's iBeam+ beamformer technology enables up to 4 times faster\* image processing in real time to provide sharper images with better penetration and thus optimal, more robust results for higher clinical confidence.

In combination with other imaging modes or advanced applications, iBeam+ can help you to improve clinical utility and operability with enhanced image uniformity, higher speed and fewer operation steps\* to achieve an optimal result.

\*compared to the previous versions of Aplio i-series

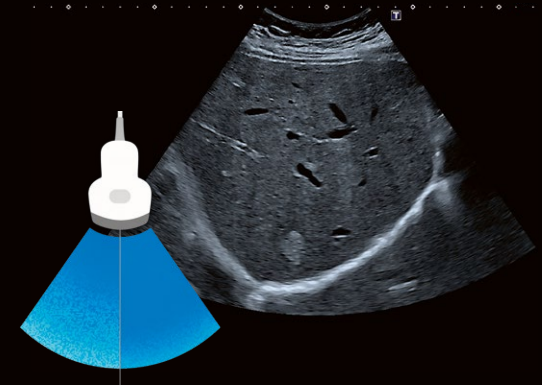
## Improved uniformity

Aplio's innovative Full Focus function enables clear, uniform images from near and to far field without the need for focus adjustments. With fewer application steps and greater uniformity, this can be particularly useful for screening examinations.



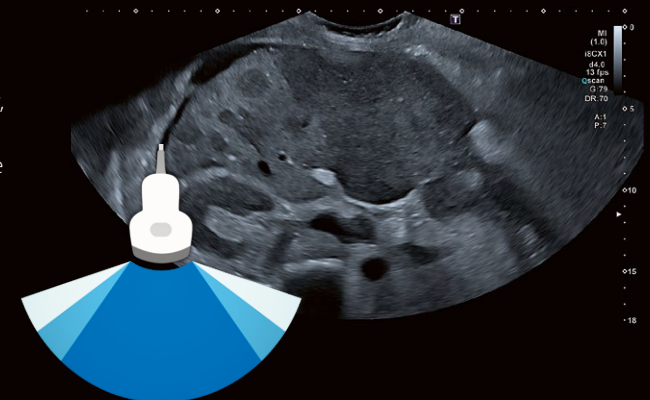
## Enhanced penetration

The improved bandwidth and processing power of the iBeam+ beamformer results in images with better penetration and detail resolution, so you can see more without having to switch to a lower frequency transducer.



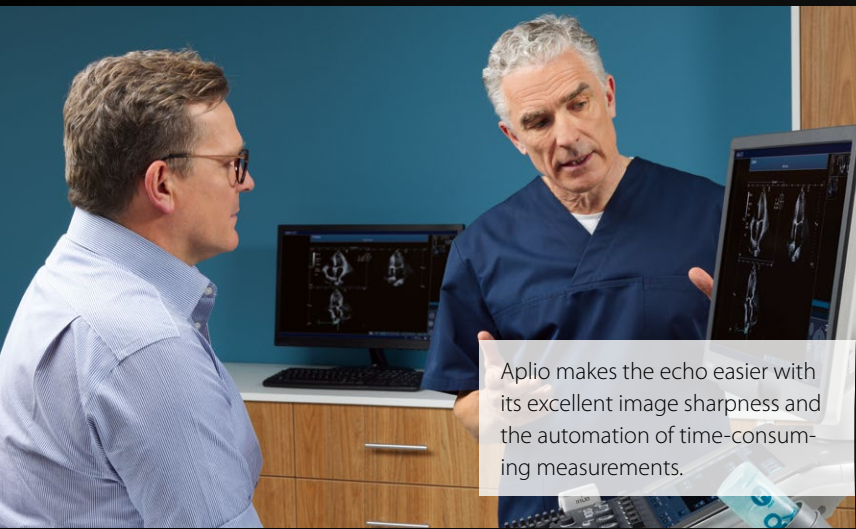
## Ultra Wide View

While typically the footprint of a transducer has limited the anatomy that we can show, Canon's Ultra Wide View allows you to extend the field of view by up to 100% while maintaining excellent image quality and frame rate throughout.





A comprehensive suite of tools that covers all aspects of women's health from assisted reproduction to full IOTA support makes Aplio a powerful solution for gynecological applications.



Aplio makes the echo easier with its excellent image sharpness and the automation of time-consuming measurements.



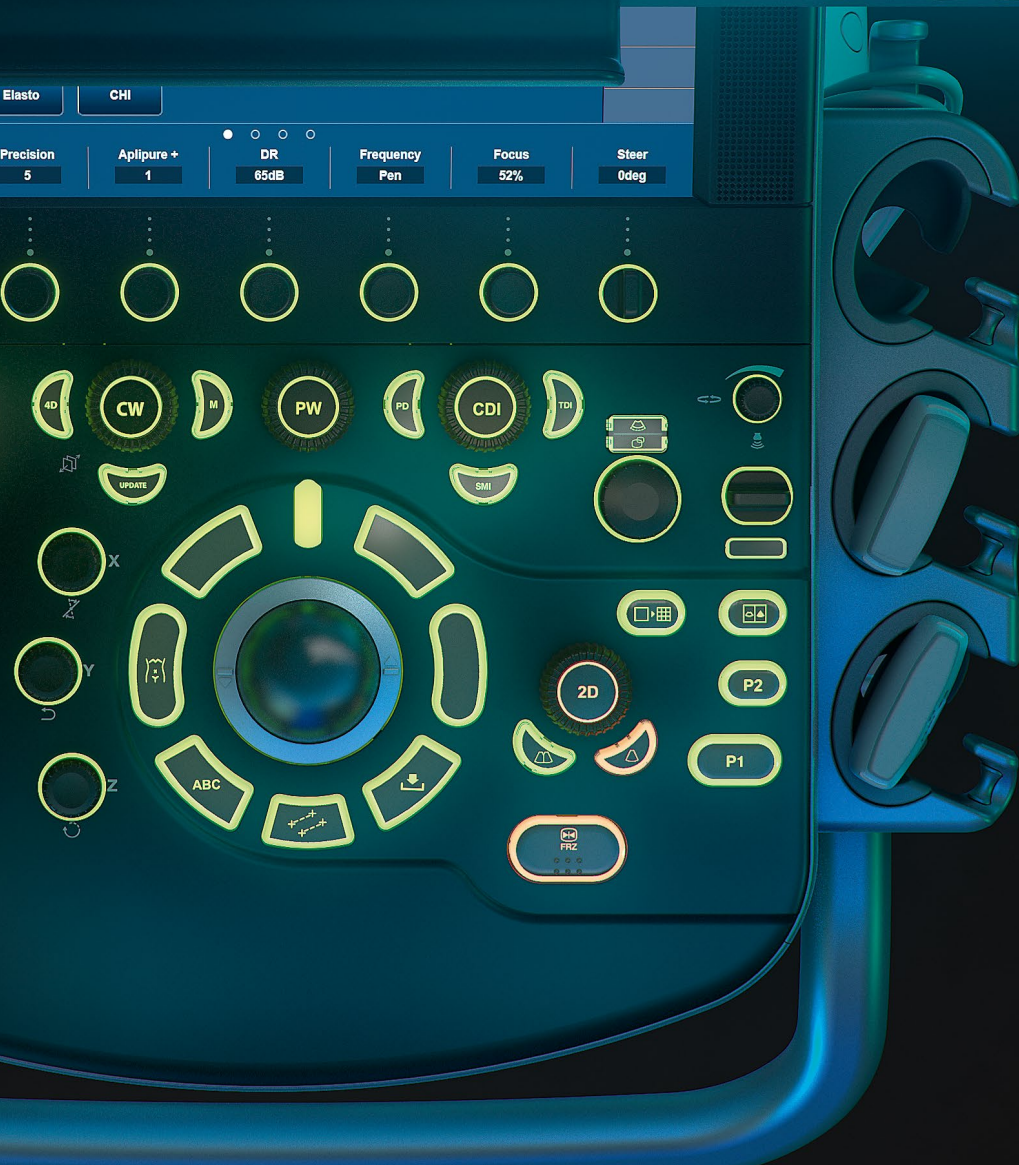
Outstanding image detail and definition with up to 33 MHz transducers and shearwave for tendons make the system ideal for high-quality MSK and nerve imaging.

# A complete multipurpose solution

Aplio i-series / Prism Edition is a truly multipurpose solution with consistently high-quality imaging, streamlined workflow and expert tools for a very wide variety of clinical specialties. Its modular concept and the fully programmable user interface make it easy to customize features and functions to exactly meet your needs now and into the future.



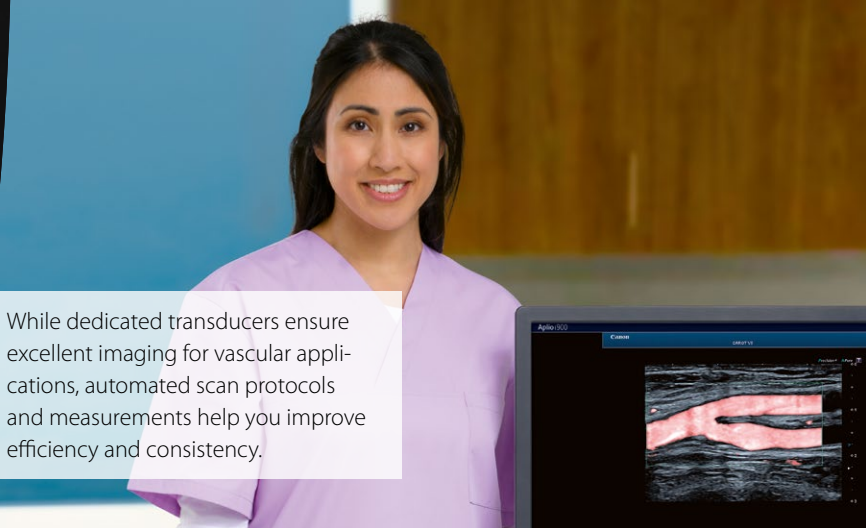
# Aplio i700



As the recognized market leader in the high-end radiology segment, Aplio i-series is characterized by its excellent image quality, comprehensive diagnostic packages and a wide range of interventional tools.



Aplio delivers excellent imaging in obstetrics, especially in difficult-to-scan, high BMI patients. AI-based, automated algorithms support fast and reliable diagnostics.



While dedicated transducers ensure excellent imaging for vascular applications, automated scan protocols and measurements help you improve efficiency and consistency.

# *Aplio i-series*

**Canon**

CANON MEDICAL SYSTEMS CORPORATION

<https://global.medical.canon>

©Canon Medical Systems Corporation 2021. All rights reserved.  
Design and specifications are subject to change without notice.  
Model number: TUS-AI900 / TUS-AI800 / TUS-AI700  
MCAUS0358EA 2021-06 CMSC/Printed in Japan

Canon Medical Systems Corporation meets internationally recognized standards for Quality Management System ISO 9001, ISO 13485.  
Canon Medical Systems Corporation meets the Environmental Management System standard ISO 14001.

Aplio and Made for Life are trademarks of Canon Medical Systems Corporation. Vitrea is a trademark of Vital Images, Inc. Tricify is a trademark of Trice Imaging, Inc. Vitrea software is designed and manufactured by Vital Images, Inc.

Disclaimer: Some features presented in this brochure may not be commercially available on all systems shown or may require the purchase of additional options. Please contact your local Canon Medical Systems representative for details.

*Made For life*