

Canon



Aquilion Exceed LB

Expand your view

160 slice wide bore CT



Expand your view

While the prevalence of cancer is expected to rise sharply, treatment precision and patient outcomes are also improving at a rapid pace. Accurate radiation therapy planning play a key role to positively impact survival rates.

To this end, Canon Medical's all-new Aquilion Exceed LB is designed for fast, smart, and accurate CT simulation. Featuring the world's largest bore, it enables you to easily position your patients with extraordinary precision.

Furthermore, powerful AI-based imaging technologies and advanced treatment-specific features to enable fast and efficient radiation oncology workflows without compromising on patient position, image quality, or reproducibility.



See the bigger picture

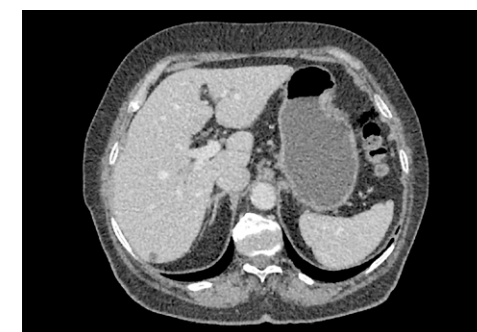
The Aquilion Exceed LB transforms radiation therapy planning with its 90 cm wide bore, edge-to-edge extended reconstruction, and our Advanced intelligent Clear-IQ Engine (AiCE) Deep Learning Reconstruction technology, so you can quickly obtain sharp, clear, distinct images with excellent delineation.



Better contouring powered by AI technologies

The comprehensive target identification and contouring of organs at risk is key to the successful delivery of radiation therapy. With this in mind, Aquilion Exceed LB enables you to perform high-quality, low-dose CT scans that provide a clear view of the targeted lesion and support you in optimizing the simulation of the exact treatment position for high-accuracy therapy planning.

Furthermore, AiCE is an innovative Deep Learning Reconstruction technology that has been trained to reduce noise and increase spatial resolution to deliver sharp, clear, and distinct images fast. AiCE has been designed to provide outstanding anatomical resolution in many body regions and tissue types, so you can confidently contour the extent of the tumor and the surrounding organs at risk. Therefore, create the best therapy plans for your patients.



Hybrid IR



AiCE

* AiCE is not provided with a self-learning function that allows the CT system to modify its own programs. Therefore, training of AiCE algorithm is not performed at the end-user's site.

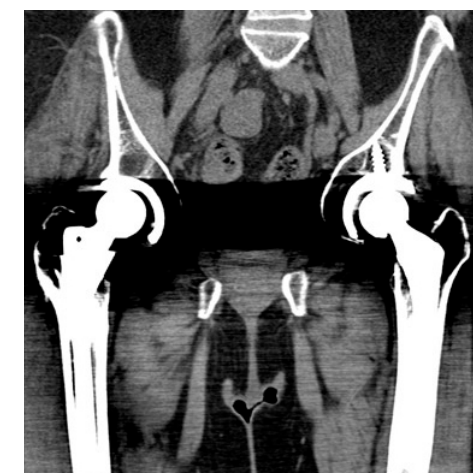
Position your patients with confidence

Regardless of where your patients' lesions are located or whatever their individual therapy need, the 90 cm large gantry bore opening of the Aquilion Exceed LB allows for more comfortable patient positioning as well as efficiency and accuracy in the CT simulation process, reducing the patients' time on the table.



See more with SEMAR

Canon Medical's innovative Single Energy Metal Artifact Reduction (SEMAR) utilizes a sophisticated reconstruction technique to virtually eliminate metallic artifact and improve the visualization of implants, supporting bone, and the adjacent soft tissue for clearer and more confident planning.



Original



SEMAR

The industry's widest true FOV and eFOV*

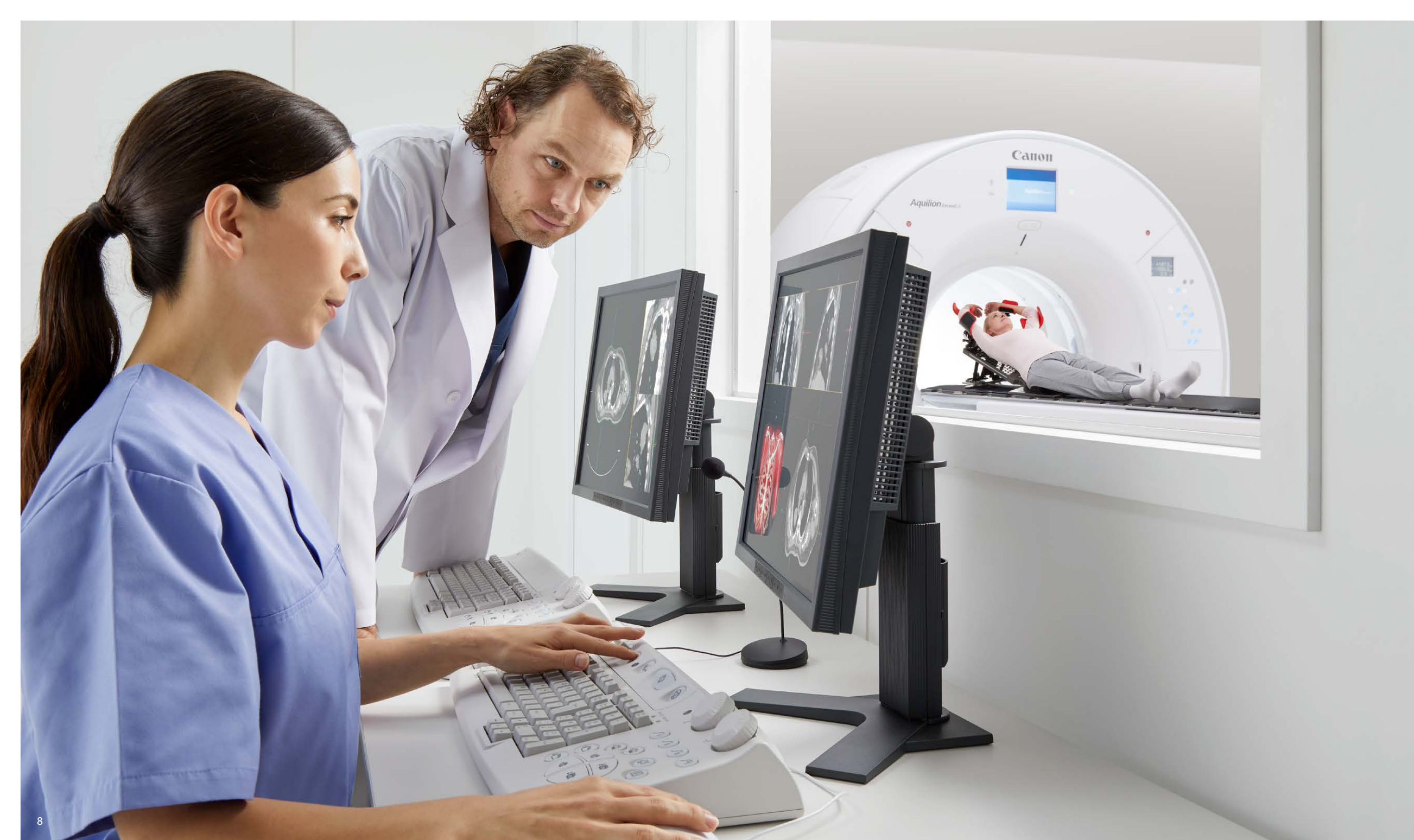
For most patients, the standard 70 cm field of view (FOV) provides the scope required to successfully simulate their radiation therapy. However, for those who are more complex due to positioning requirements, an extended FOV (eFOV) of 90 cm is essential in order to visualize the skin margin.

With the largest eFOV in the industry, you can now ensure that all your patients get the comprehensive radiation therapy planning they require for a more tailored and targeted treatment approach.



e-field of view

* Option



Experience an intelligent workflow

The Aquilion Exceed LB enhances your productivity and maximizes your clinical capabilities at every stage, from acquisition to simulation with the latest tools and applications.

Quick and automated patient set-up

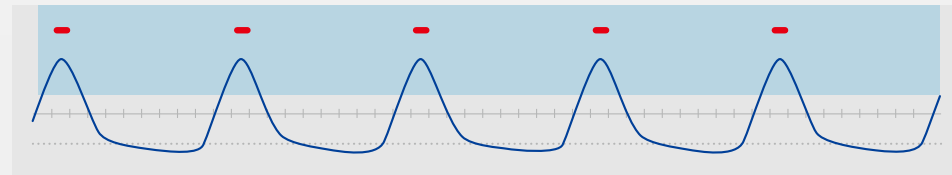
The Aquilion Exceed LB is specifically designed to meet your oncology challenges and improve patient care. Canon Medical's advanced ^{SURE}Position technology remotely adjusts your patient's position to the gantry's iso-center for enhanced accuracy. Combine this with our smart Tech-Assist Lateral Slide, which enables you to remotely move the couch left or right at the touch of a button, and you'll have everything you need to position your patients for successful imaging and planning.

Manage respiratory motion

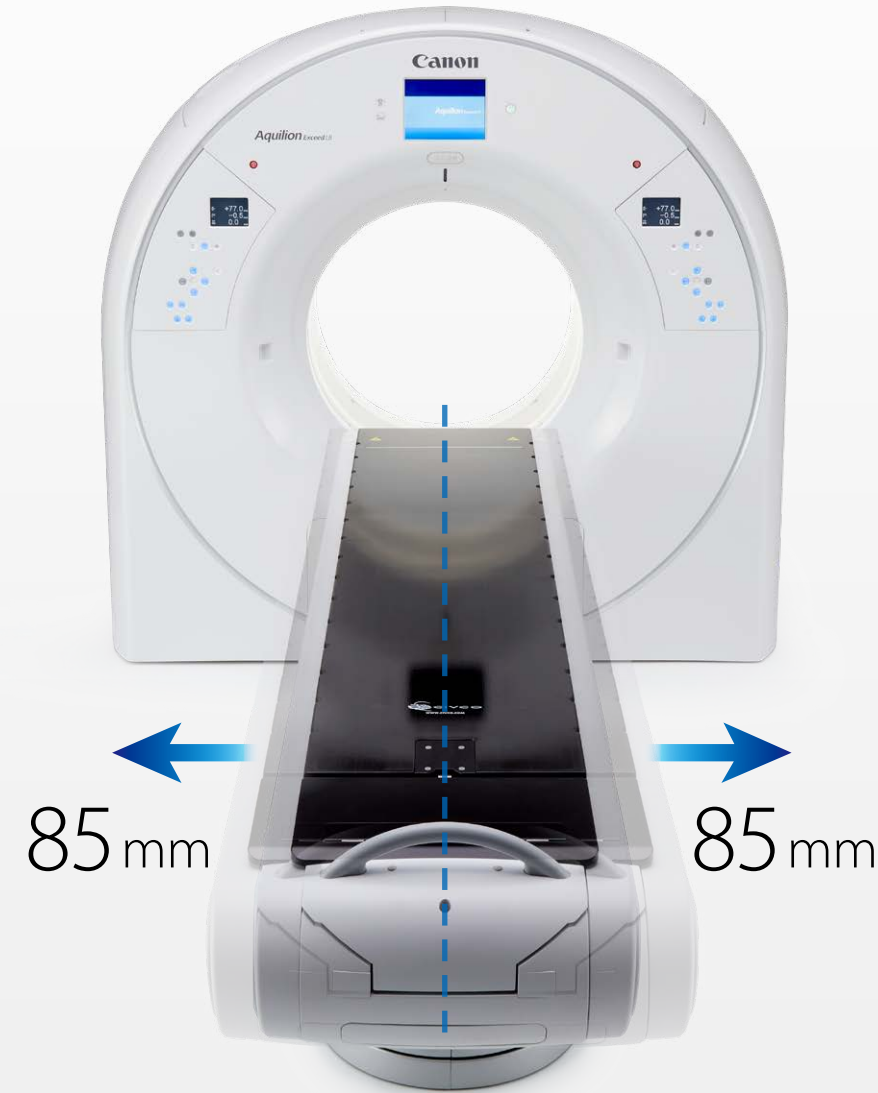
Aquilion Exceed LB supports Canon Medical's sophisticated suite of ^{SURE}Technologies and other advanced software tools to further increase clinical utility. It integrates seamlessly with a range of respiratory gating devices and can perform both phase and amplitude sorting.

It supports respiratory-gated scanning based on two scan modes. The first mode, volume scan, allows for prospective single-phase acquisition as well as whole breath cycle acquisition with phase reconstruction (binning). The second mode, helical scan, supports both phase and amplitude binning and allows for retrospective respiratory-gated image acquisition.

The system's 80 row detector, 4 cm coverage per rotation, which is the widest in large bore CT systems, is a major advantage for this type of scanning. The wider coverage allows an area of anatomy to be scanned faster compared to narrower detector configurations. This allows respiratory gated scans to be performed in fewer breath cycles, making the exam more comfortable for the patient.



phase and amplitude binning



Fast acquisition with high resolution

With its 80 row, 0.5 mm detector, the system can deliver 160 slices per rotation, so you can achieve a greater volume of coverage in a fraction of the time you're used to. This is ideal when working with complex cases that involve anatomy such as the heart or chest, as it enables you to quickly obtain high-quality images.

Dose management

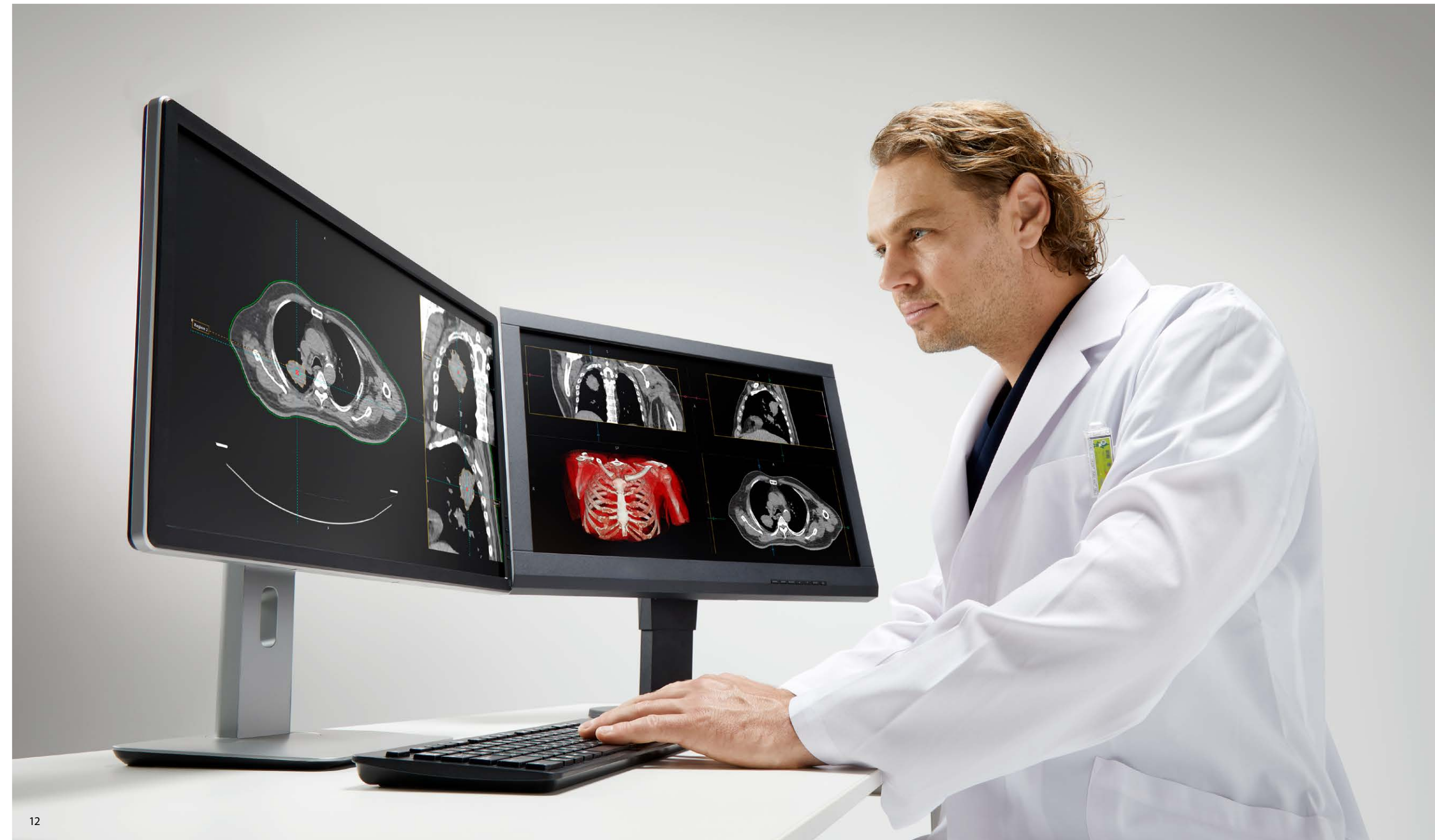
A range of technologies has been built into the Aquilion Exceed LB to lower the dose and maximize image quality with an accelerated workflow. You can now expect reconstructions at up to 70 fps* with automatic transfer to simulation or planning.

One system for all your challenging cases

The Aquilion Exceed LB offers all the versatility and diagnostic imaging capabilities you would expect from a top-of-the-line radiation oncology planning system that has the widest CT bore currently available. It even connects with your existing solutions, planning devices, and positioning lasers for a smoother and productive workflow.

* Option





Broaden your business horizon

The Aquilion Exceed LB is a smart, efficient solution which is designed to enhance your operations with fast installation, high reliability, and low energy requirements.

Easy installation and integration

Thanks to its compact gantry and small footprint, the Aquilion Exceed LB can fit into most standard radiation oncology suites without the need for major building renovation or adaptation. What's more, installation is fast, cost-effective and efficient, and can thus be completed with minimal disruption to your department.

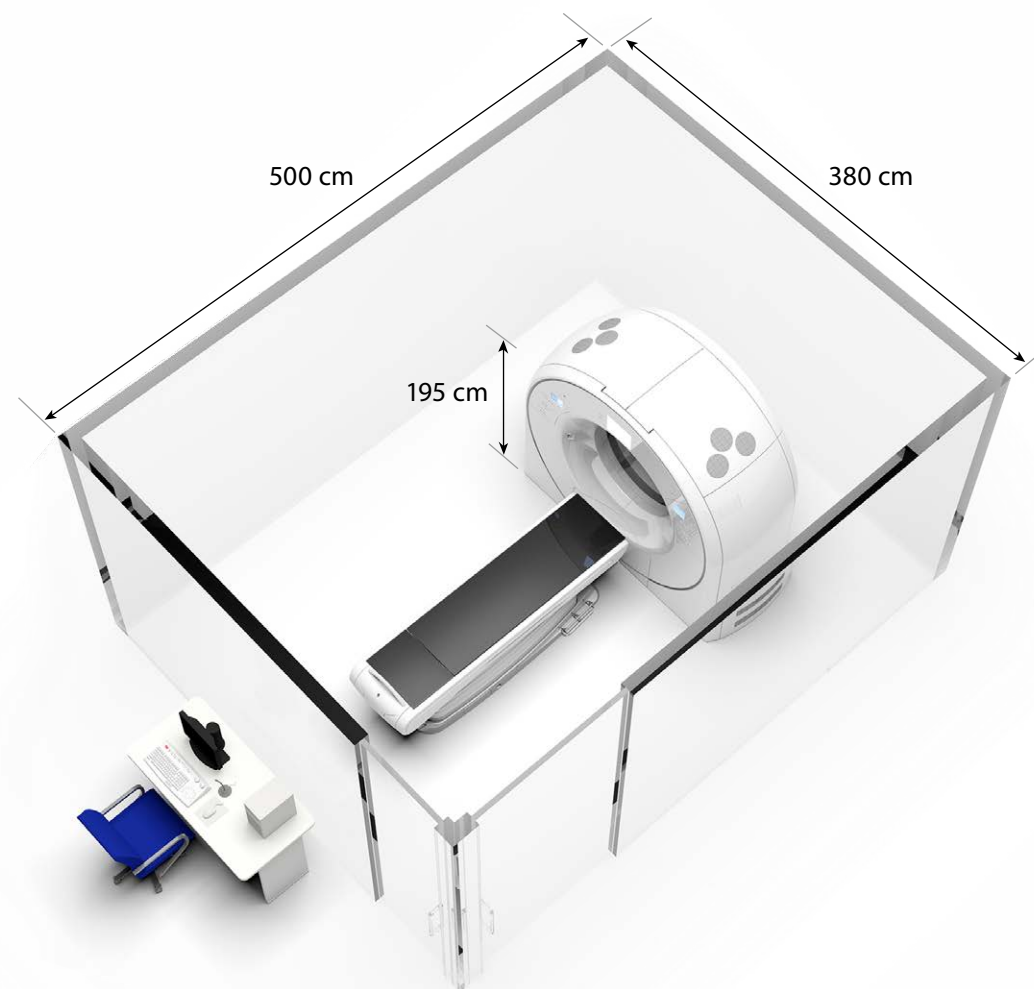
Increased reliability and uptime

The power of Aquilion Exceed LB is backed by Canon Medical's high-quality service and education offerings to ensure it remains in peak condition for many years.

This includes access to expert technicians, remote service solutions, as well support from your local engineering and clinical application teams to help ensure you have everything you need to make the most of your CT scanner.

Expand your clinical capabilities

Built with tomorrow in mind, the Aquilion Exceed LB is a system that will enhance the way you deliver oncology care today and long into the future with advanced technologies that will help you deliver a tailored approach to patient care.



Installation Space



Power Capacity





More than radiation therapy planning

The Aquilion Exceed LB has been designed to help physicians make the most of its speed, accuracy, and flexibility in a range of radiology settings. Whether your focus is on trauma, neurology or interventional radiology, you will find a suite of features that can boost clinical confidence and streamline the way you work. The system can also be connected to your Vitrea™ imaging solution for additional ease and fast access to clinical insights.



Built with all your patients in mind

Not only does the Aquilion Exceed LB's ultra-wide bore enable fast and flexible positioning, it also ensures that patients of nearly any size and condition can be scanned comfortably. The system accommodates bariatric patients weighing up to 315 kg (604 lbs), so you can provide a more inclusive and wide-ranging service.

An intelligent workflow for every situation

Harness the power of AI in your clinical practice and you'll be setting your team up for a faster, more effective way of working. From the emergency room to the interventional suite, our latest Deep Learning Reconstruction technology lets you obtain high-quality, low-dose images for uncompromised diagnostic confidence.

Combine this with an 80 row 0.5 mm detector, and you've got a system that can deliver 160 slices per rotation at the highest possible resolution within a duration suitable for virtually any clinical setting and patient condition.

Simple and straightforward CT fluoroscopy

The Aquilion Exceed LB can be equipped with a hybrid CT fluoroscopy function, which enables one-handed operation with ergonomically designed controls and a versatile touchscreen. It also comes with Canon Medical's AIDR 3D iterative reconstruction, so you can optimize the speed and safety of low-dose biopsies and interventional procedures.

Furthermore, the Aquilion Exceed LB's large bore offers easier access with more space between the needle or ablation probes and CT gantry. This additional clearance enables more freedom and confidence when obtaining images during needle placement, which – combined with the touchscreen tablet – can support finer control and minimal complications.

A great asset for improved productivity

In addition to meeting all your clinical needs, the Aquilion Exceed LB has been designed to take your service delivery to the next level. The system is reliable, cost-efficient, and backed by our highly rated customer service. Aquilion Exceed LB enables fast patient throughput and additional reimbursement opportunities to increase your return on investment.





Main specifications

Detector		PUREVISION detector
		80 rows, 0.5 mm
Gantry	Rotation time	Min. 0.4 s
	Bore size	90 cm
Patient couch	Load	315 kg, 694 lbs* ²
	Max. scan range	150-200 cm* ²
Reconstruction speed	Helical	70 fps* ¹ , 50 fps
	Iterative reconstruction	AIDR* ³ 3D Enhanced
Reconstruction	Deep learning reconstruction	AiCE* ¹
	FOV / eFOV	70 / 90 cm* ¹
	Power capacity	110 kVA
Installation	Space	19.3 m ²

*¹ Option

*² Depending on system configuration

*³ Adaptive Iterative Dose Reduction

Clinical results may vary due to clinical settings, patient preparation and other factors.

Due to local regulatory processes, some of the products included in the brochure may not be available in each country. Please contact your sales representative for the most current information.

Aquilion Exceed LB

Canon

CANON MEDICAL SYSTEMS CORPORATION

<https://global.medical.canon>

©Canon Medical Systems Corporation 2020. All rights reserved.
Design and specifications are subject to change without notice.
Model number: TSX-202A MCACT0351EA 2020-10 CMSC/Produced in Japan

Canon Medical Systems Corporation meets internationally recognized standards for Quality Management System ISO 9001, ISO 13485.
Canon Medical Systems Corporation meets the Environmental Management System standard ISO 14001.

Aquilion Exceed LB, SEMAR, ^{SURE}Position, ^{SURE}Technologies and Made for Life are trademarks of Canon Medical Systems Corporation.
Vitrea is a trademark of Vital Images, Inc.

Made For life